



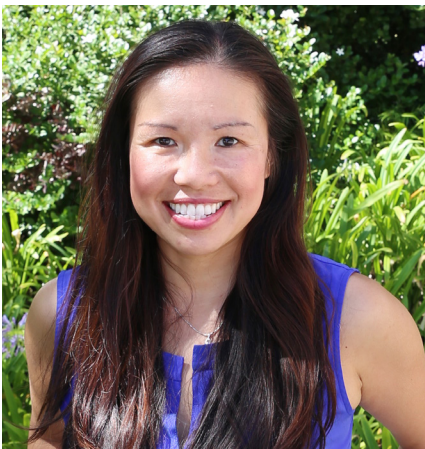
THE OHIO STATE  
UNIVERSITY  
OFFICE OF RESEARCH

## Ohio State ADVANCE

# REACH for Commercialization™

REACH is a year-round resource and network for women interested in amplifying the impact of their research by exploring technology transfer, commercialization and entrepreneurship.

---



### **A Faculty Entrepreneur: The road is always under construction**

Friday, February 26th

Noon – 1 p.m.

Via Zoom; please contact Katie Musson,  
musson.7@osu.edu for registration details

### **Featured Lecturer: Michelle Khine, PhD**

Professor, Department of Biomedical Engineering; Director of Faculty Innovation; Director of BioENGINE Samueli School of Engineering  
University of California, Irvine

### **ABOUT OUR SPEAKER:**

Michelle Khine, Ph.D. is a Professor of Biomedical Engineering at UC Irvine. She is the founding Director of Faculty Innovation at the Samueli School of Engineering and founding Director of BioENGINE (BioEngineering Innovation and Entrepreneurship) at UC Irvine. Prior to joining UC Irvine in 2009, she was an Assistant & Founding Professor at UC Merced. Michelle received her BS and MS from UC Berkeley in Mechanical Engineering and her PhD in Bioengineering from UC Berkeley and UCSF. She is the Scientific Founder of 6 start-up companies. Michelle was the recipient of the TR35 Award and named one of Forbes '10 Revolutionaries' in 2009 and by Fast Company Magazine as one of the '100 Most Creative People in Business' in 2011. She was awarded the NIH New Innovator's Award, was named a finalist in the World Technology Awards for Materials, and was named by Marie-Claire magazine as 'Women on Top: Top Scientist'. She was named Innovator of the Year 2017 for the Samueli School of Engineering at UC Irvine. Michelle is a Fellow of AIMBE (American Institute of Medical and Biological Engineering, recognizing the top 2% of biomedical engineers nationally) and well as a Fellow of the National Academy of Inventors.

---

The mission of Ohio State ADVANCE is to increase the representation, advancement and recruitment of women faculty in the academic STEMM (Science, Technology, Engineering, Mathematics and Medicine) careers, and contribute to the development and success of global research leaders.